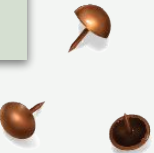


Welcome  
Class of 2027





# Table of contents

01

*The Who's*

02

*Schedules*

03

*Attendance*

04

*Daily  
Operations*

05

*ParentVue*

06

*Questions*



01



Dr. Carlyn Floyd - Principal

# The Who's Who of Woodson





# Administrators and Duties

*Paula DiSalvo*

Alpha: A - Dj  
Subjects:  
Learning Services  
CTE

*Kathy Martin*

Alpha: Dk - Mar  
Subjects:  
Comp Sci  
Math  
Science

*Bomin Collins*

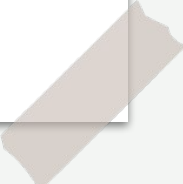

Alpha: Mas - Rom  
Subjects:  
English  
ESOL

*Marc Brooks*

Alpha: Ron - Zz  
Subjects:  
Fine/Perf Arts  
Social Studies  
World Languages

*Kelly O'Connell*

All students and  
subjects with the CSS  
and Cat B programs



# Student Activities and Student Services

**Blair Smith** - Director  
of Student Activities

**Warren Williams** -  
Assistant Director of  
Student Activities

**Alexa Puggnetti** -  
Administrative Assistant

**Stephanie Pollack** -  
Assistant Director of  
Student Activities - Clubs

[woodsonsports.com](http://woodsonsports.com)

**Josh Peters** - Director  
of Student Services

**Darlene Sheppard** -  
Registrar

**Debbie Glover** -  
Transcript AA

**Casey Delaney** -  
SIA

# Counselors by Alphabet

<i>Counselor</i>	<i>Alpha</i>	<i>Counselor</i>	<i>Alpha</i>
<b><i>Korpacz</i></b>	A - Bu	<b><i>Powell</i></b>	Mas - Ni
<b><i>Metrinko</i></b>	Bv - Dj	<b><i>Demaree</i></b>	Nj - Rom
<b><i>Wood</i></b>	Dk - Had	<b><i>Travis</i></b>	Ron - Thi
<b><i>Ford</i></b>	Hae - Kh	<b><i>Nguyen</i></b>	ThJ - Zz
<b><i>Walter</i></b>	Ki - Mar	<b><i>Parker</i></b>	CSS

02

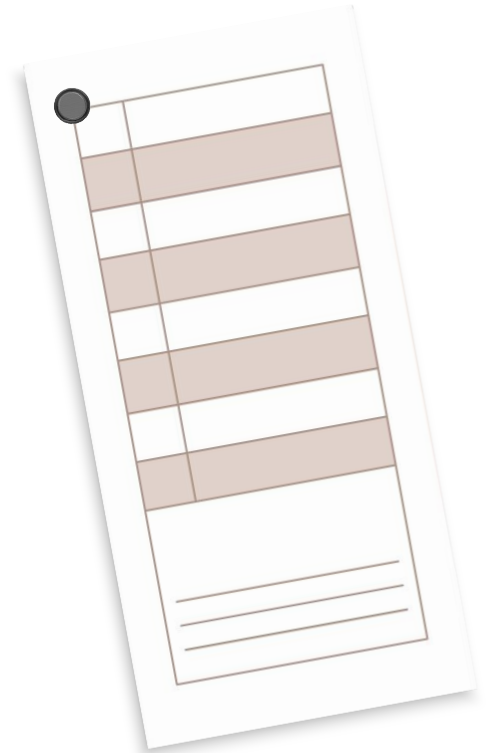
Schedules



# Schedules

We use an Odd / Even schedule

- School starts at 8:10am
- Each block is approximately 80 minutes
- Schedules will be “live” on Aug 17th
- Lunch is based on 5th and 6th period classes - teachers will review

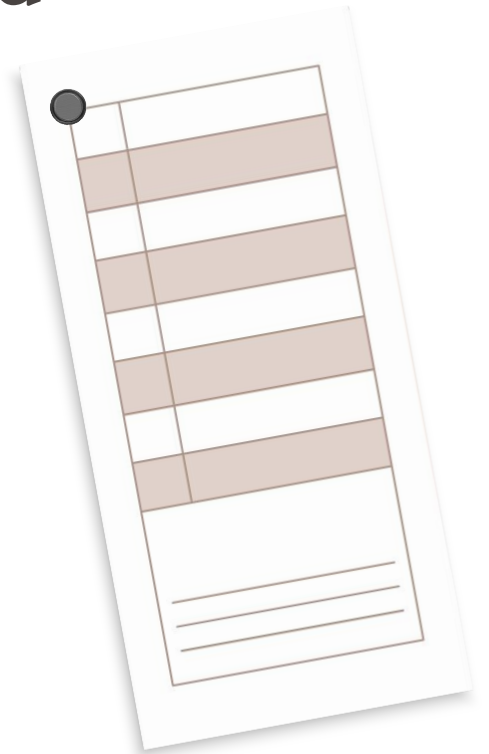




# Schedules – 3rd period

On Odd days during 2nd block - 9:48 - 11:15

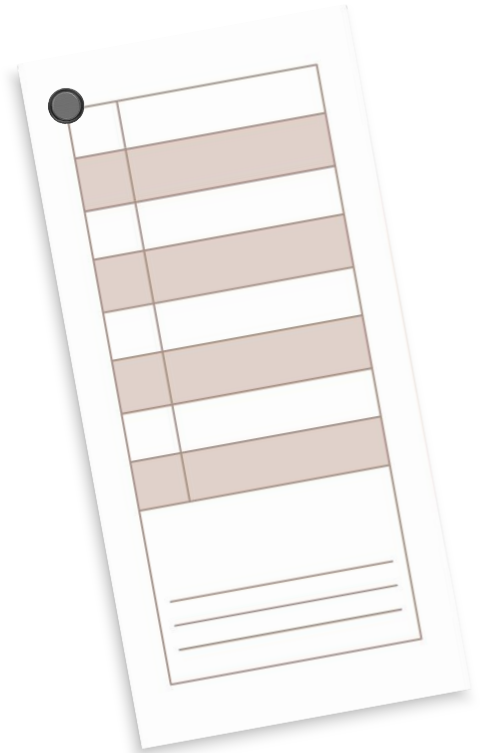
- 3rd Period is broken up into two 40 min blocks
- Students will return to their classes on a rotating basis during this 3rd period
- Advisory class is during the 3rd Return of 3rd period



# Schedules – Advisory

Advisory happens during the 3rd Return during 3rd Period

- SEL lessons
- POG POL
- Intervention / Remediation
- Extra time to work on other assignments



03



*Attendance*



# Attendance Procedures

*703-503-4800*

- A parent/guardian must notify the attendance office anytime their student is absent from school: all day absence, check-in late, check-out early
- A note is the best way to notify the attendance office
- Pre-arranged absences do not guarantee that the absence will be excused
- If your student gets sick while at school, they must check out through the clinic



# Attendance Procedures

- Morning call outs are done around 9:30 AM
  - You will receive this call if your child has not checked into school even if you have called to let the attendance office know they will be checking in late
- It is best to send in a note
- Check ParentVue and have your student contact their teacher if there is a question with an individual class, contact attendance office if it an entire day in question



# Testing Center

- IF your student is absent (excused) for an assessment - makeups will be done after school on Tuesdays or Wednesdays
- Arrangements must be made in advance with the student's teacher
- Location is in room F 105 starting at 3:00 PM
- Late buses are provided both days - they leave at approximately 5:00 PM



04



*Daily Operations*

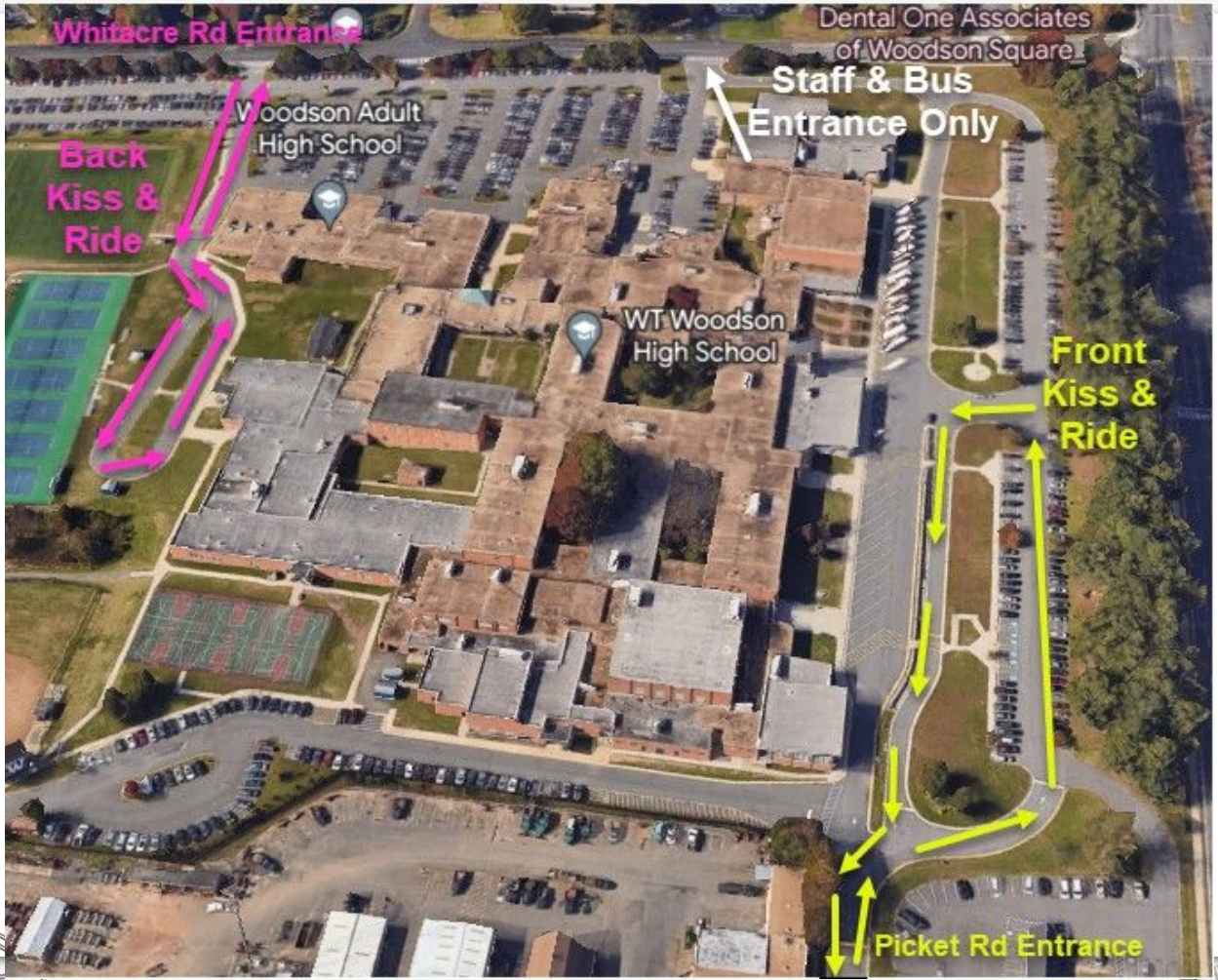


# Daily Operations

- **Kiss and Ride - two different locations based on which road you are entering Woodson**
  - **Pickett Entrance - front Kiss and Ride**
  - **Whitacre Entrance - back Kiss and Ride**
- **Pick up / Drop off shelf**
  - **Located in the main office - you will need to notify student of items**
- **No outside food deliveries - however you can drop off lunch on the drop off shelf in main office**







# Daily Operations

- [myschoolbucks.com](https://myschoolbucks.com)
- Will need to create an account and then will need to add your student to your account
- Used for all finances in school
  - Breakfast / lunch account
  - Student class fees
  - Course fees



05

# ParentVue





# ParentVue Accounts

## *Already have*

Check weekly  
Can verify  
attendance  
Can check on  
grades

## *Forgot Password*

Go to FCPS  
website and  
search ParentVue  
to reset

## *Need Account*

Should have  
received a special  
“pin” - if not  
contact student  
services to  
receive a new  
“pin”

Welcome  
Class of  
2027!



06

*Questions*



When all else fails  
and you need an  
answer...

Email:  
[woodsonconnect@  
fcps.edu](mailto:woodsonconnect@fcps.edu)





It is our job to  
help your student  
learn to advocate  
for themselves

If you have a question about a  
grade / assignment - have your  
student ask their teacher

